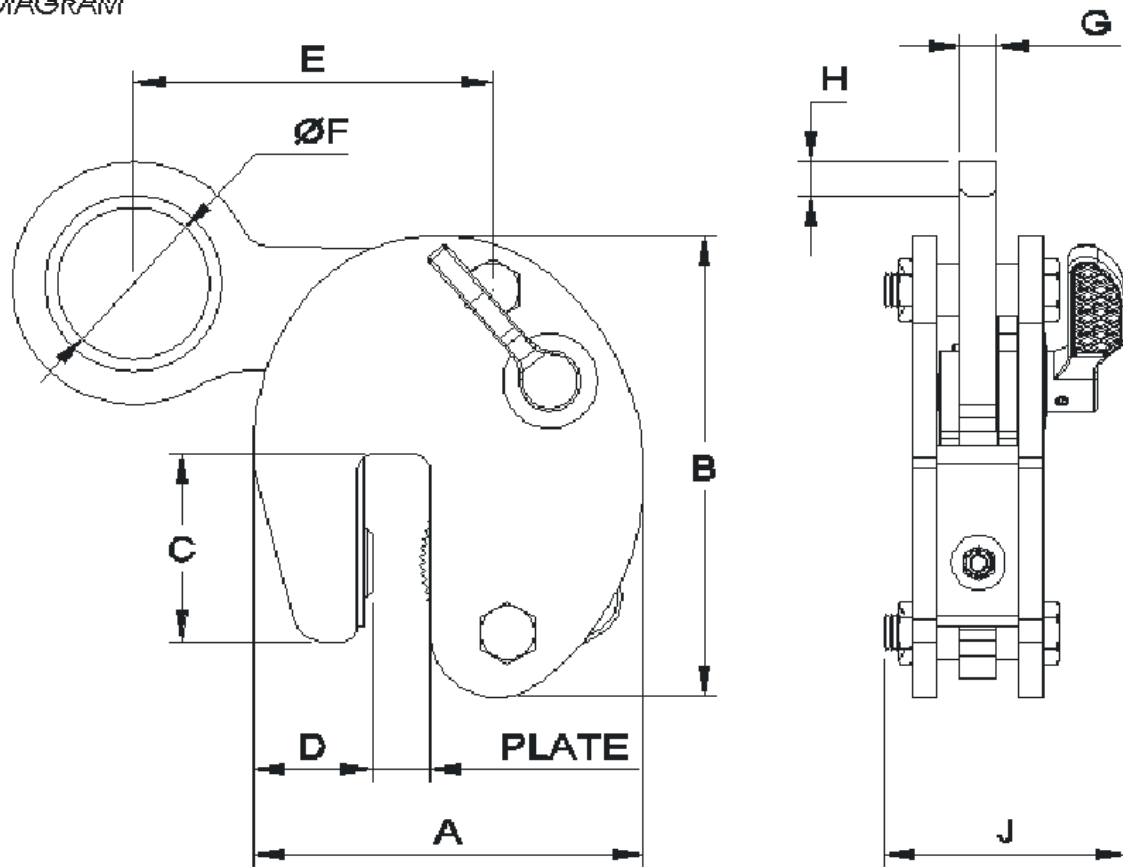


DESCRIPTION

The TTR series of clamps can be used on girders and RSJ's up to a surface hardness of 300 Brinell. This range of clamps has been developed for handling structural beams with the flanges in a vertical position, or "H" position. Girders can be lifted and stacked horizontally. The hooking is designed to be as near to the centre of gravity as possible, resulting in a near horizontal lift

DIAGRAM

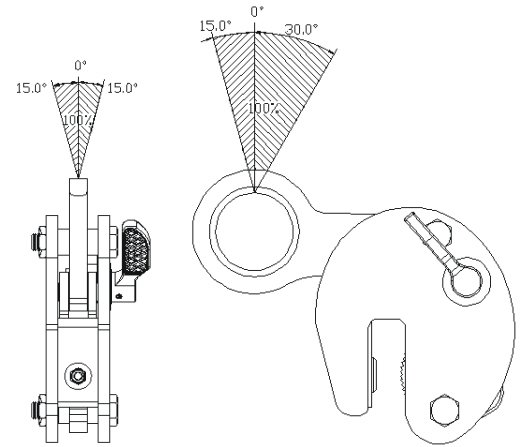
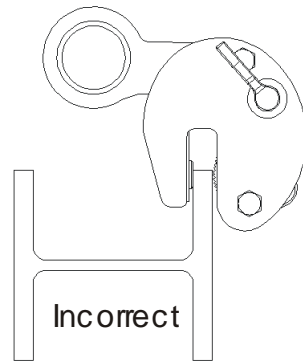
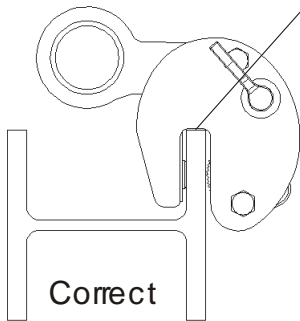


TABLE

MODEL	WLL KG	MIN LOAD	PLATE mm	WEIGHT KG	A	B	C	D	E	F	G	H	J
TTR 750	750	50	5 - 16	4	128	153	50	39	62	80	12	15	118
TTR 1500	1500	150	5 - 25	10	180	203	70	58	76	121	20	19	149
TTR 3000	3000	300	5 - 28	12	194	208	76	62	81	136	20	25	159

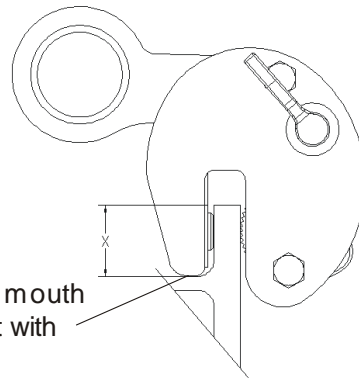
Load Diagram
with sling vertical

Top of mouth in
contact with flange



OPTIONS

By offering various sizes and lifting capacities the TTR girder clamp is a versatile tool for transporting girders and joists. The clamp is fitted with a cam operated locking mechanism



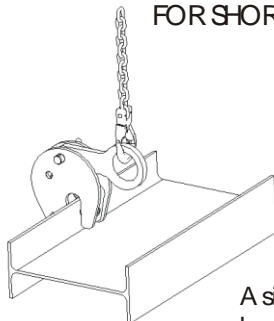
The clamp is restricted by the size of the flange. The whole of the pad must be in contact with the flat of the flange

Model	Min Load X
TTR 750	45
TTR 1500	62.5
TTR 3000	69.5

RESTRICTIONS

The working load limit of the clamp should be as close as possible to the actual load to be lifted. This ensures that the clamp is working at maximum efficiency. For minimum loads see stamping details on the side of the clamp. Excessive wear and a reduction in working life can be caused if a clamp is continuously used to lift the same thickness material.

FOR SHORT BEAMS



A single clamp can be used

FOR LONG BEAM

2 clamps and a lifting beam must be used

